



MONTHLY MEMBERSHIP PROGRESS REPORT

District 32 D

Results as of: 1/31/2015

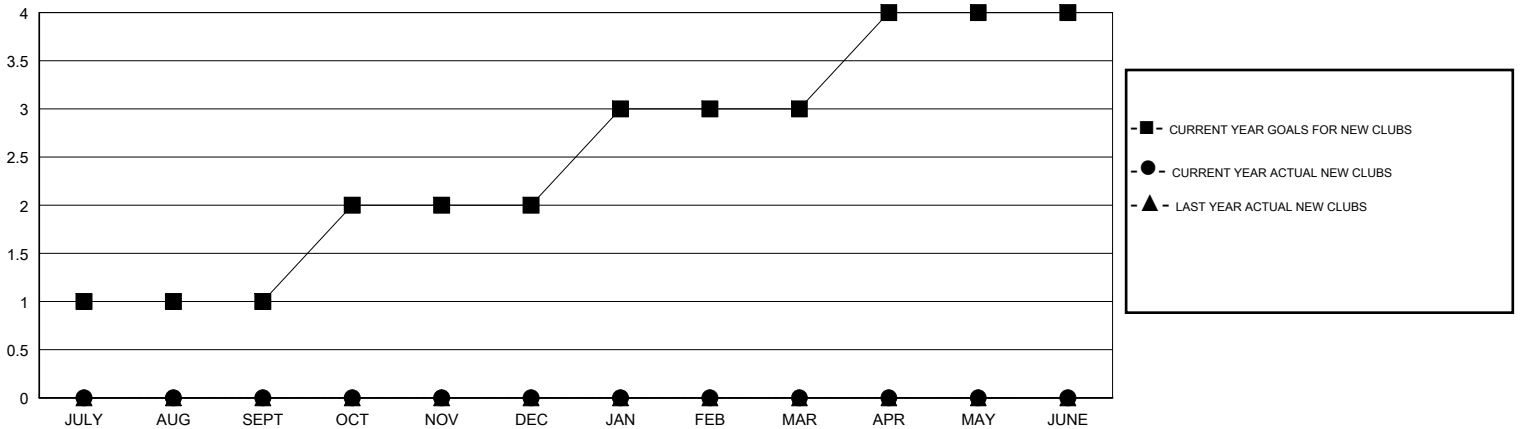
GMT: CARL HARRELL

LOCATION SOUTH CAROLINA

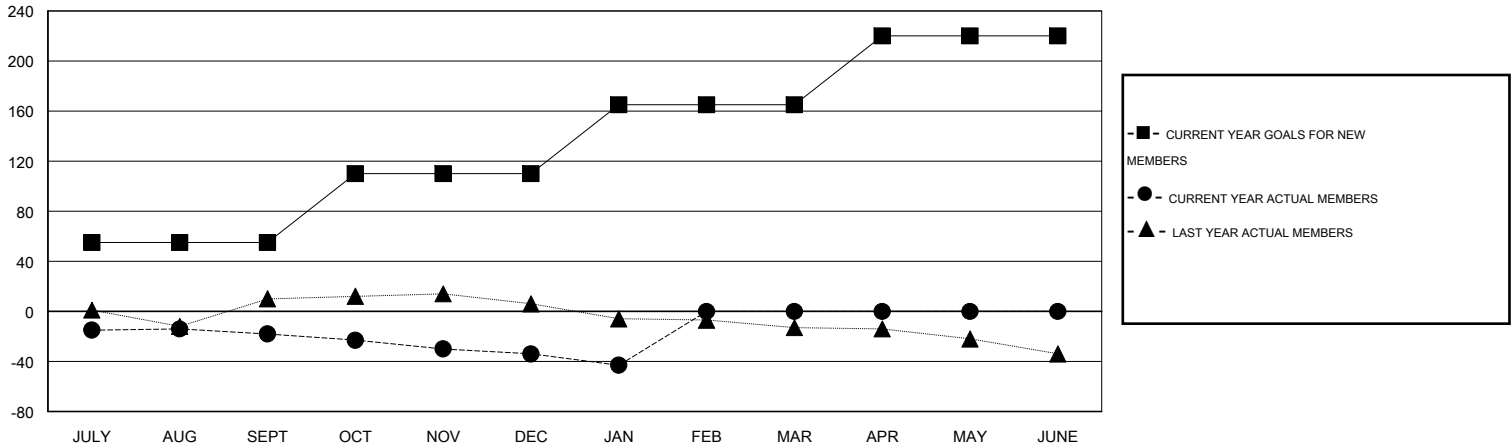
GMT CA 1

Clubs					Members				
RESULTS FOR 2014-2015					RESULTS FOR 2014-2015				
QUARTER	NEW CLUB GOAL	NEW CLUBS	DROPPED CLUBS	NET GAIN/LOSS	QUARTER	NEW MEMBER GOAL	CHARTER AND NEW MEMBERS ADDED	DROPPED MEMBERS	NET GAIN/LOSS
JULY/AUG/SEPT	1	0	0	0	JULY/AUG/SEPT	55	18	36	-18
OCT/NOV/DEC	1	0	0	0	OCT/NOV/DEC	55	25	41	-16
JAN/FEB/MAR	1	0	0	0	JAN/FEB/MAR	55	7	16	-9
APR/MAY/JUNE	1	0	0	0	APR/MAY/JUNE	55	0	0	0

GOALS AND ACTUAL NEW CLUBS CUMULATIVE



GOALS AND ACTUAL MEMBERS CUMULATIVE



DROPPED CLUBS: 0	21 CLUBS OF 36 ADDED 1 OR MORE NEW MEMBERS	<u>GENDER DISTRIBUTION</u>	
<u>DROPPED MEMBERS</u>		MALE	718 (70.19%)
DECEASED	18	FEMALE	305 (29.81%)
CLUB CANCELLED	0	<u>FAMILY UNIT MEMBERS</u> 208	
OTHER	75	<u>HEAD OF HOUSEHOLD</u> 103	
TOTAL	93	<u>NON-HEAD OF HOUSEHOLD</u> 105	

[CLICK HERE FOR HEALTH ASSESSMENT DATA](#)